

Site Profile

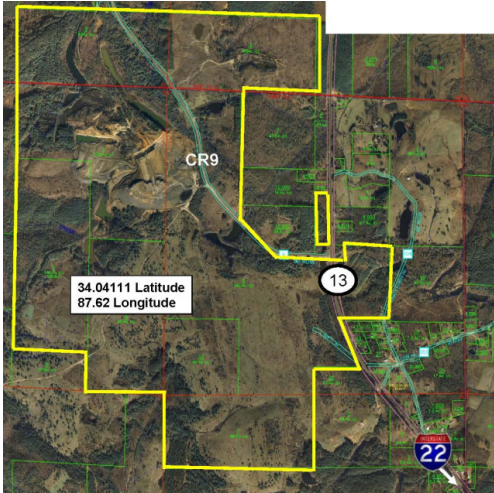


Alabama Site Selection Database

Coop Dist of Winston County

City: Lynn

County: Winston



Site Id: 4462

Street Address Intersection of CR 9 and Hwy 13
6 mi north via Hwy 13 from exit 39 on I-22

Nearest City Lynn

Within City Limits No

Zip Code 35575

Latitude 34.0370

Longitude -87.6087

Located in Industrial Park Yes

Park Name Winston County Industrial Park I

Within Enterprise Zone No

Within Favored Geographic Area Yes

Within Renewal Community No

Transportation

Rail Service

Provider: Norfolk Southern

Track Status: Not Specified

Provider #2:

Track Status:

Navigable Waterway Tombigbee River

Dock Facility: Port 26 to 50 miles

Nearest Commercial Air City Birmingham, AL

Miles to Nearest Service: 67

Highways

Highway Type	Highway Name	Miles to Access	Four Lane
Interstate	I-22	6.0	
Interstate	I-65	50.0	
Federal Highway	278	5.0	No
Federal Highway	78	20.0	Yes
Alabama Highway	13	0.0	No

Price

Sale Price \$8,000.00 per acre

Land Lease Rate (Annual)

Negotiable? Yes

Date Quoted Jun 23, 2009

Price Comments

Land sale price and lease rate negotiable.

General Site Data

Total Acres	818
Available Acres	818
Additional Available	Yes
Largest Tract	150
Smallest Tract	12
Protective Covenants	Yes
Phase 1 Environmental	Yes
Preliminary Geotechnical:	Yes
Topography	Slight Rolling
Preliminary Wetlands	Yes
Assessment:	
Ecological Review:	Yes
Cultural Resources Review:	Yes
Zoning	None
Previous Use	Industrial
Previous Use Description	Reclaimed Site

Utilities

Natural Gas

Provider: NW Alabama Gas District

Status: Unavailable

Size of Main:

Main PSI:

Water

Provider: Lynn Water Works

Status: Existing Connection

Size of Main: 8 in.

Sewer

Provider:

Status: Not Specified

Size of Main:

Electricity

Provider #1: Alabama Power Company

Status: Existing Connection

Service to Property: Yes

(Distribution):

Transmission: Yes

Provider #2:

Telecommunications

Provider: TDS Communications

Fiber Optics:

Redundancy:

xDSL Available: Yes

Site Profile



Alabama Site Selection Database

Coop Dist of Winston County

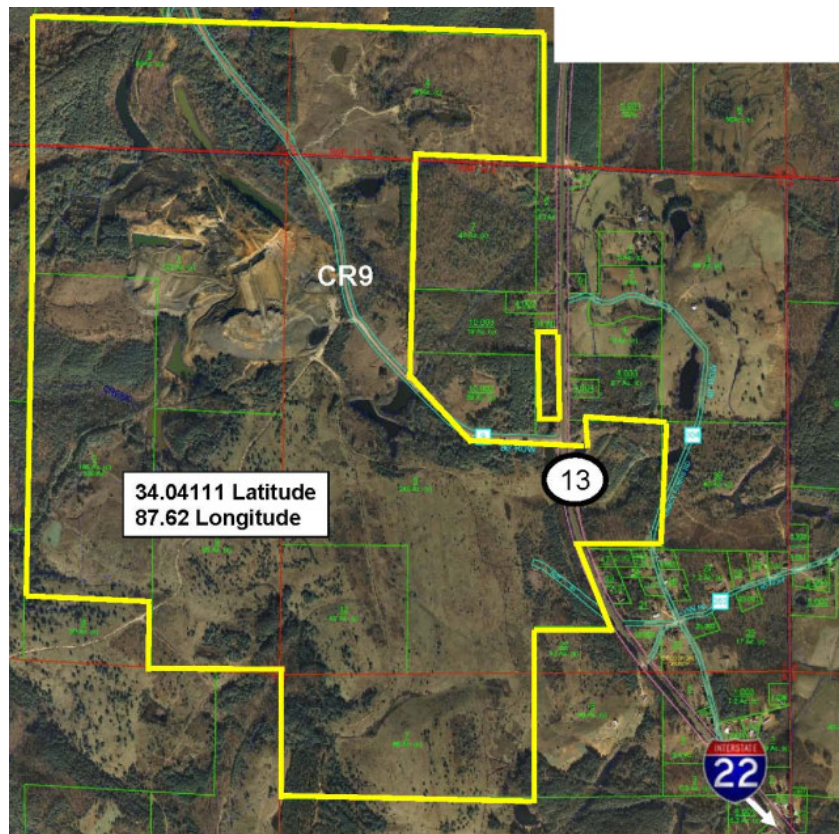
City: Lynn

County: Winston

General Comments

Additional contiguous large scale acreage available. Two prepared ready to build sites available in the park.

Site information is current as of 6/23/09



To meet the needs of industry, Alabama's economic development community is working to designate an inventory of industrial sites with sufficient site documentation for accurate, timely project evaluation. The AdvantageSite logo indicates that this property has met requirements for program designation. For more information on AdvantageSite and program requirements, visit our website.

Economic Development Partnership of Alabama
www.advantagealabama.com

Site Profile

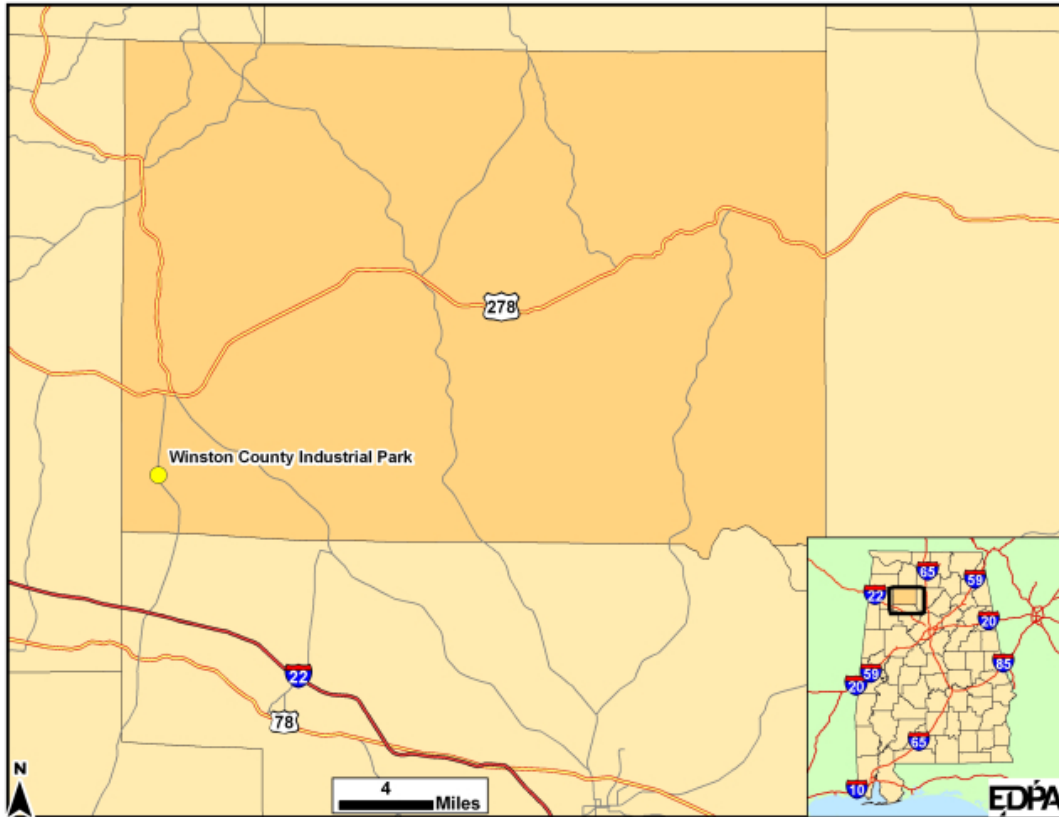


Alabama Site Selection Database

Coop Dist of Winston County

City: Lynn

County: Winston



To meet the needs of industry, Alabama's economic development community is working to designate an inventory of industrial sites with sufficient site documentation for accurate, timely project evaluation. The AdvantageSite logo indicates that this property has met requirements for program designation. For more information on AdvantageSite and program requirements, visit our website.

Economic Development Partnership of Alabama
www.advantagealabama.com